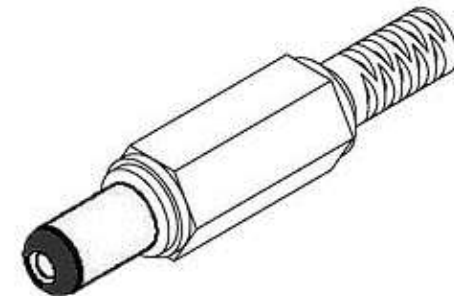
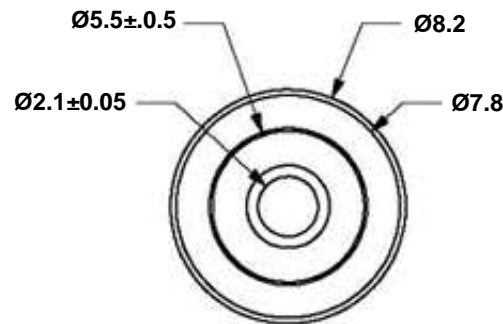
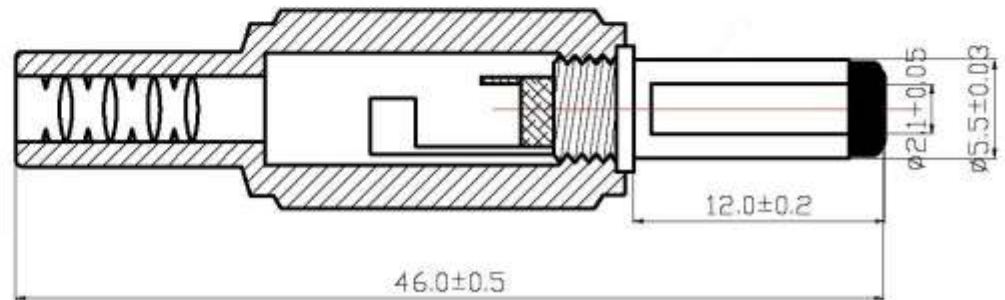
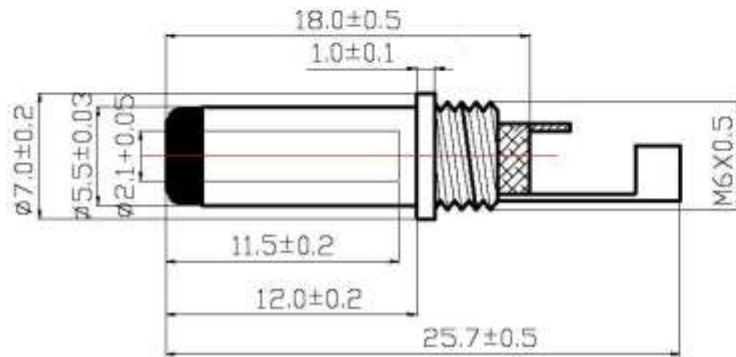


Tolerance is  
± .2MM  
unless  
otherwise  
specified.



**Mating Receptacle Options for 205-12MM**

1. 205INL - Cable Mount
2. 205INL-XL - Cable Mount
3. 22HP037-2.1PC - PC Mount Right Angle

<b>PART NO.</b>	<b>205-12MM</b>
<b>DATE</b>	<b>12.11.2014</b>
<b>APPROVAL</b>	<b>CB</b>
<b>UNIT</b>	<b>mm</b>
<b>REV</b>	<b>0</b>

<b>PART TITLE</b>	<b>DC Plug, Male 2.1 x 5.5 x 12mm, Octagonal Shell</b>
-------------------	--

