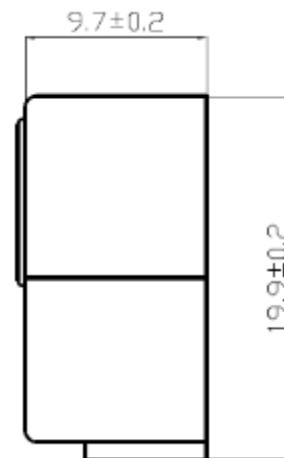
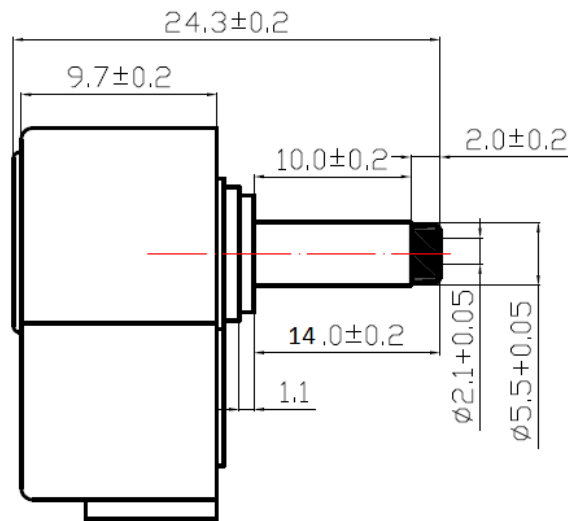
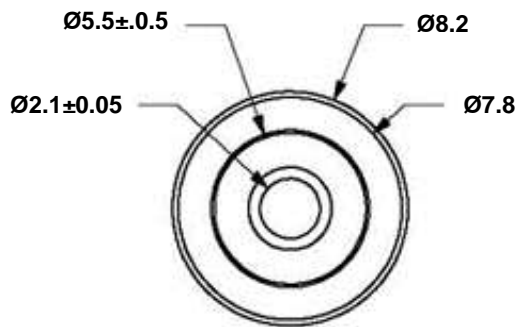
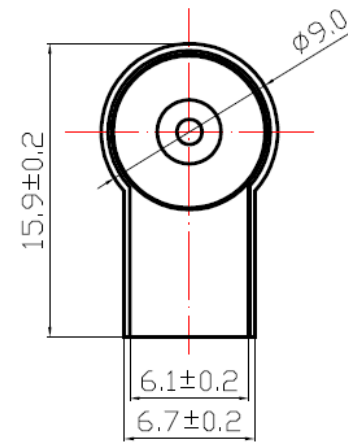
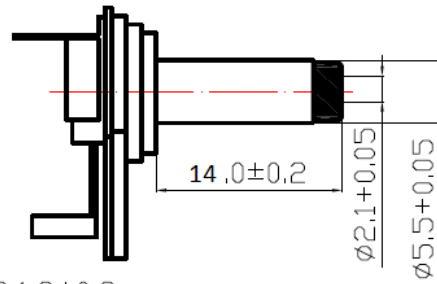
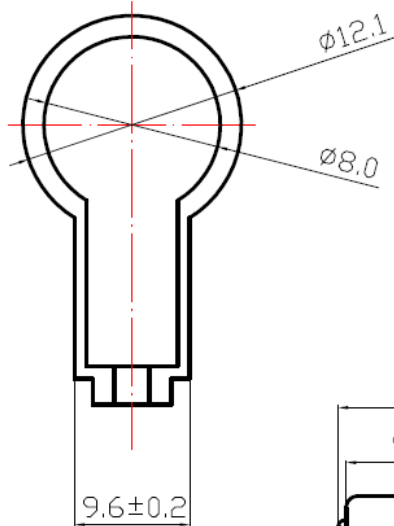




Tolerance is
± .2MM
unless
otherwise
specified.



| Mating Receptacle Options for 205A-RA | |
|---------------------------------------|--------------------------------------|
| 1. | 205INL - Cable Mount |
| 2. | 205INL-XL - Cable Mount |
| 3. | 22HP037-2.1PC - PC Mount Right Angle |

| | |
|----------|------------|
| PART NO. | 205A-RA |
| DATE | 11.02.2015 |
| APPROVAL | CB |
| UNIT | mm |
| REV | 0 |

| | |
|------------|---|
| PART TITLE | DC Plug, Male 2.1 x 5.5 x 14mm, Right Angle |
|------------|---|

CONDOR ELECTRONICS, INC.
 T: 408-745-7141 F: 408-745-0439
 780 Montague Expy. Ste. 406
 San Jose, CA 95131 USA
sales@condorelectronics.net