

US



AUS

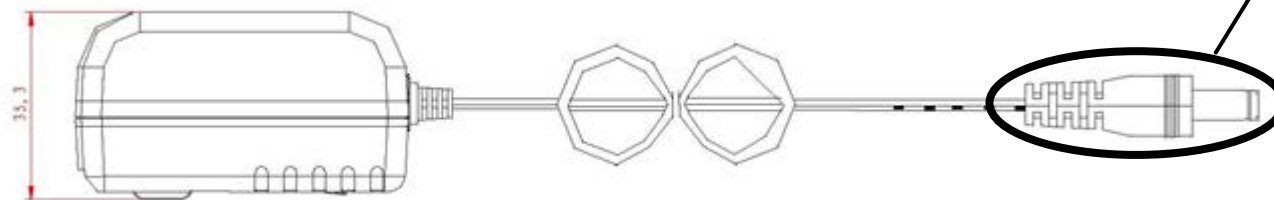


BSI



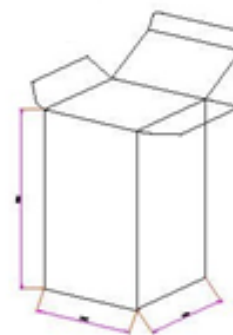
EURO

Output Plug and Polarity are Dependent on Customer Requirements




General Specifications

- Input: 100~240Vac/ 50~60Hz
- Output: +5VDC/0~2500mA Regulated
- DC Cord: 5 FT, 20 AWG
- Operating/Storage Temperature: 0°C ~+40°C/ -20°C~+80°C
- Operating/Storage Humidity: 5%~90%RH
- Approvals: UL/CUL/FCC/LPS/BSMI/PSE/CCC/RCM/KC/IRAM/TUV-GS,BS/CE/WEEE/ROHS/VI
- Meets Energy Efficiency Level VI Standards
- Protection: Over Voltage/Short Circuit
- Packaged Unit Weight: .38 lb
- Carton Quantity: 50 pcs



FULL SET
100 x 55 x 87mm

<i>ITEM NO.</i>	S-5V0-2A5-P30	<i>PART TITLE</i>	Energy Efficient Interchangeable Plugs 5VDC / 2.5A Universal Input Power Supply
<i>PART NO.</i>	S6-052A5P	 CONDOR ELECTRONICS, INC. T: 408-745-7141 F: 408-745-0439 780 Montague Expy. Ste. 406 San Jose, CA 95131 USA sales@condorelectronics.net	
<i>DATE</i>	10.04.2017		
<i>APPROVAL</i>	WS		
<i>UNIT</i>	mm		
<i>REV</i>	1		