

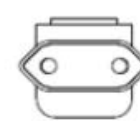
US



AUS

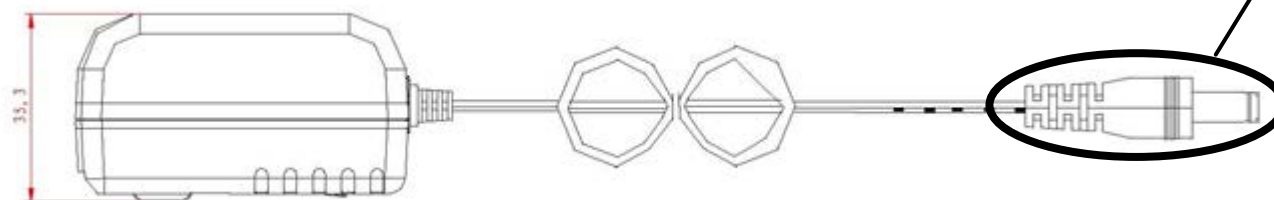


BSI



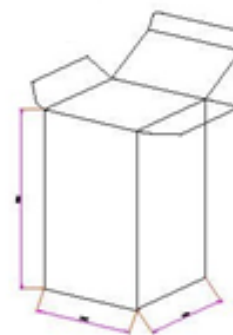
EURO

Output Plug and Polarity are Dependent on Customer Requirements




### General Specifications

- Input: 100~240Vac/ 50~60Hz
- Output: +7.5VDC/0~1500mA Regulated
- DC Cord: 6 FT, 20 AWG
- Operating/Storage Temperature: 0°C ~+40°C/ -20°C~+80°C
- Operating/Storage Humidity: 5%~90%RH
- Approvals: UL/CUL/FCC/LPS/BSMI/PSE/CCC/RCM/KC/IRAM/TUV-GS,BS/CE/WEEE/ROHS/VI
- Meets Energy Efficiency Level VI Standards
- Protection: Over Voltage/Short Circuit
- Packaged Unit Weight: .38 lb
- Carton Quantity: 50 pcs



**FULL SET**  
**100 x 55 x 87mm**

<b>ITEM NO.</b>	S-7V5-1A5-P30	<b>PART TITLE</b>	Energy Efficient Interchangeable Plugs 7.5 VDC / 1.5A Universal Input Power Supply
<b>PART NO.</b>	S6-071A5P	 <b>CONDOR ELECTRONICS, INC.</b> T: 408-745-7141 F: 408-745-0439 990 San Antonio Road Palo Alto, CA 94303 USA <a href="mailto:sales@condorelectronics.net">sales@condorelectronics.net</a>	
<b>DATE</b>	4.25.2016		
<b>APPROVAL</b>	TN		
<b>UNIT</b>	mm		
<b>REV</b>	0		