

US



AUS

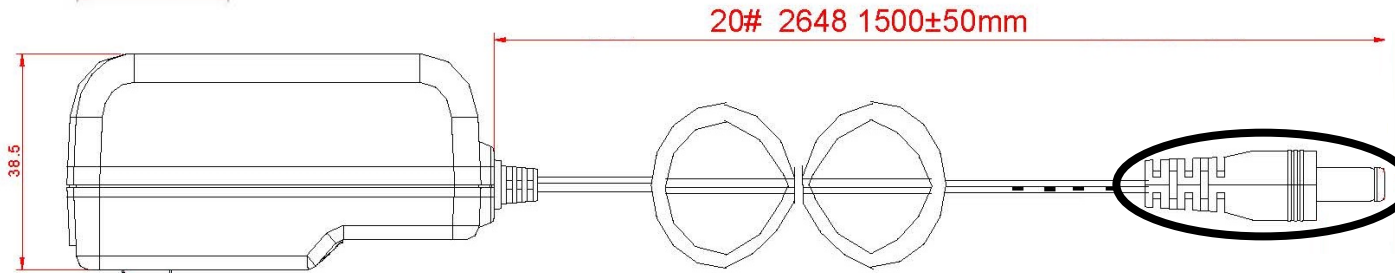


BSI



EURO

Output Plug and Polarity are Dependent on Customer Requirements

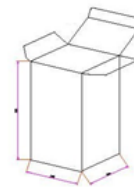


General Specifications

- Input: 100~240Vac/ 50~60Hz
- Output: +18VDC/0~1300mA Regulated
- DC Cord: 5 FT, 20 AWG
- Operating/Storage Temperature: 0°C ~+40°C/ -20°C~+80°C
- Operating/Storage Humidity: 5%~90%RH
- Approvals: UL/CUL/FCC/LPS/PSE/CCC/RCM/KC/IRAM/EAC/NRCAN/TUV-GS,BS/CE/WEEE/ROHS/VI
- Meets Energy Efficiency Level VI Standards
- Protection: Over Voltage/Short Circuit
- Packaged Unit Weight: .46 lb
- Carton Quantity: 50 pcs

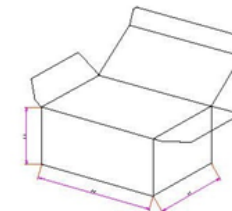
White Inner Box Dimensions

Full Set




100 x 55 x 87mm

Individual Interchangeable Plug



80 x 65 x 45mm

ITEM NO.	S-18V0-1A3-P30	PART TITLE	Energy Efficient Interchangeable Plugs 18 VDC / 1.3A Universal Input Power Supply
PART NO.	S6-181A3P	 CONDOR ELECTRONICS, INC. T: 408-745-7141 F: 408-745-0439 780 Montague Expy. Ste. 406 San Jose, CA 95131 USA sales@condorelectronics.net	
DATE	2.16.2018		
APPROVAL	WS		
UNIT	mm		
REV	0		

Safety Standards

Type(Marking)	Country/Region	Standard
UL/CUL	USA/Canada	Safety: UL 60950-1
		Safety: CSA C22.2 No 60950-1-07
CE	Europe	In accordance with the council directive 2004/108/EC Adapter Standard: EN61204-3 EMI: EN 55022 EMS: EN 5502-4 ERP 5278/2009
CCC	China	Safety: GB-4946-2001 EMI: GB9254-2008 EMS: GB17625.1-2003
PSE	Japan	適用試験基準：電気用品の技術上の基準を定める省令の解釈 Applied Standard for Testing: Description of the technical requirements by the METI Ordinance. 別表第十二J 60950-1(h26), J55022(H22)
FCC	USA	EMI: FCC Part 15, Subpart B, Class B
GS	Germany	Safety: EN 60950-1
RCM	Australia/	Safety: SAA – AX/NZS 60950.1 EMI: C-TICK – AS/NZD CISPER22
R-MEPS	New Zealand	AS/NZS 4665.1:2005/Amd 1:2009 and AS/NZS 4665.2:2005/Amd 1:2009
BSMI	Taiwan	Safety: CNS14336-1 年版 (99) EMI: CNS13438 年版 (95)