

US



AUS

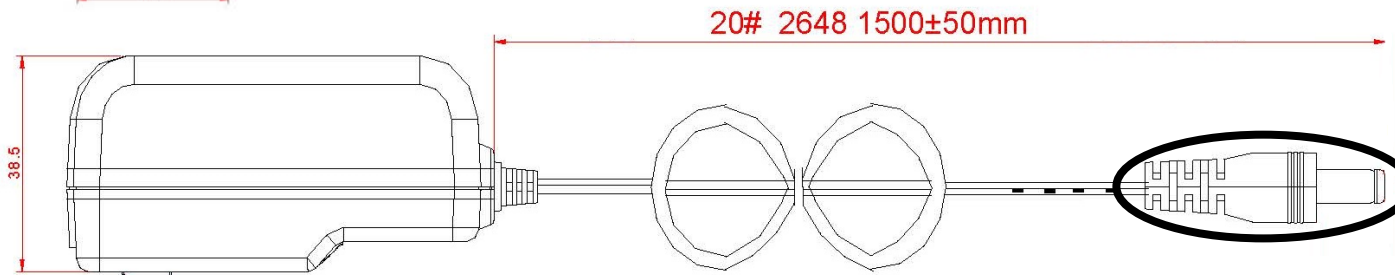


BSI



EURO

Output Plug and Polarity are Dependent on Customer Requirements

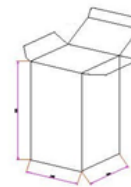


General Specifications

- Input: 100~240Vac/ 50~60Hz
- Output: +24VDC/0~1000mA Regulated
- DC Cord: 5 FT, 20 AWG
- Operating/Storage Temperature: 0°C ~+40°C/ -20°C~+80°C
- Operating/Storage Humidity: 5%~90%RH
- Approvals: UL/CUL/FCC/LPS/PSE/CCC/RCM/KC/IRAM/EAC/NRCAN/TUV-GS,BS/CE/WEEE/ROHS/VI
- Meets Energy Efficiency Level VI Standards
- Protection: Over Voltage/Short Circuit
- Packaged Unit Weight: .46 lb
- Carton Quantity: 50 pcs

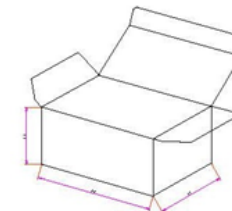
White Inner Box Dimensions

Full Set




100 x 55 x 87mm

Individual Interchangeable Plug



80 x 65 x 45mm

| | | | |
|----------|----------------|---|---|
| ITEM NO. | S-24V0-1A0-P30 | PART TITLE | Energy Efficient Interchangeable Plugs 24 VDC / 1A Universal Input Power Supply |
| PART NO. | S6-241A0P |  CONDOR ELECTRONICS, INC. T: 408-745-7141 F: 408-745-0439 990 San Antonio Road Palo Alto, CA 94303 USA sales@condorelectronics.net | |
| DATE | 2.16.2018 | | |
| APPROVAL | WS | | |
| UNIT | mm | | |
| REV | 1 | | |

Safety Standards

| Type(Marking) | Country/Region | Standard |
|---------------|----------------|---|
| UL/CUL | USA/Canada | Safety: UL 60950-1 |
| | | Safety: CSA C22.2 No 60950-1-07 |
| CE | Europe | In accordance with the council directive 2004/108/EC Adapter Standard: EN61204-3 EMI: EN 55022 EMS: EN 5502-4 ERP 5278/2009 |
| CCC | China | Safety: GB-4946-2001 EMI: GB9254-2008 EMS: GB17625.1-2003 |
| PSE | Japan | 適用試験基準：電気用品の技術上の基準を定める省令の解釈 Applied Standard for Testing: Description of the technical requirements by the METI Ordinance. 別表第十二J 60950-1(h26), J55022(H22) |
| FCC | USA | EMI: FCC Part 15, Subpart B, Class B |
| GS | Germany | Safety: EN 60950-1 |
| RCM | Australia/ | Safety: SAA – AX/NZS 60950.1 EMI: C-TICK – AS/NZD CISPER22 |
| R-MEPS | New Zealand | AS/NZS 4665.1:2005/Amd 1:2009 and AS/NZS 4665.2:2005/Amd 1:2009 |
| BSMI | Taiwan | Safety: CNS14336-1 年版 (99) EMI: CNS13438 年版 (95) |

